

## ORIGINAL ARTICLE

# Cord-Blood Engraftment with Ex Vivo Mesenchymal-Cell Coculture

Marcos de Lima, M.D., Ian McNiece, Ph.D., Simon N. Robinson, Ph.D., Mark Munsell, M.S., Mary Eapen, M.D., Mary Horowitz, M.D., Amin Alousi, M.D., Rima Saliba, Ph.D., John D. McMannis, Ph.D., Indreshpal Kaur, Ph.D., Partow Kebriaei, M.D., Simrit Parmar, M.D., Uday Popat, M.D., Chitra Hosing, M.D., Richard Champlin, M.D., Catherine Bollard, M.D., Jeffrey J. Molldrem, M.D., Roy B. Jones, M.D., Ph.D., Yago Nieto, M.D., Ph.D., Borje S. Andersson, M.D., Nina Shah, M.D., Betul Oran, M.D., Laurence J.N. Cooper, M.D., Ph.D., Laura Worth, M.D., Muzaffar H. Qazilbash, M.D., Martin Korbling, M.D., Gabriela Rondon, M.D., Stefan Ciurea, M.D., Doyle Bosque, R.N., Ila Maewal, Pharm.D., Paul J. Simmons, Ph.D., and Elizabeth J. Shpall, M.D.

## ABSTRACT

**BACKGROUND**

Poor engraftment due to low cell doses restricts the usefulness of umbilical-cord-blood transplantation. We hypothesized that engraftment would be improved by transplanting cord blood that was expanded ex vivo with mesenchymal stromal cells.

**METHODS**

We studied engraftment results in 31 adults with hematologic cancers who received transplants of 2 cord-blood units, 1 of which contained cord blood that was expanded ex vivo in cocultures with allogeneic mesenchymal stromal cells. The results in these patients were compared with those in 80 historical controls who received 2 units of unmanipulated cord blood.

**RESULTS**

Coculture with mesenchymal stromal cells led to an expansion of total nucleated cells by a median factor of 12.2 and of CD34+ cells by a median factor of 30.1. With transplantation of 1 unit each of expanded and unmanipulated cord blood, patients received a median of  $8.34 \times 10^7$  total nucleated cells per kilogram of body weight and  $1.81 \times 10^6$  CD34+ cells per kilogram — doses higher than in our previous transplantations of 2 units of unmanipulated cord blood. In patients in whom engraftment occurred, the median time to neutrophil engraftment was 15 days in the recipients of expanded cord blood, as compared with 24 days in controls who received unmanipulated cord blood only ( $P < 0.001$ ); the median time to platelet engraftment was 42 days and 49 days, respectively ( $P = 0.03$ ). On day 26, the cumulative incidence of neutrophil engraftment was 88% with expansion versus 53% without expansion ( $P < 0.001$ ); on day 60, the cumulative incidence of platelet engraftment was 71% and 31%, respectively ( $P < 0.001$ ).

**CONCLUSIONS**

Transplantation of cord-blood cells expanded with mesenchymal stromal cells appeared to be safe and effective. Expanded cord blood in combination with unmanipulated cord blood significantly improved engraftment, as compared with unmanipulated cord blood only. (Funded by the National Cancer Institute and others; ClinicalTrials.gov number, NCT00498316.)

From the Departments of Stem Cell Transplantation and Cellular Therapy (M.L., I. McNiece, S.N.R., A.A., R.S., I.K., P.K., S.P., U.P., C.H., R.C., J.J.M., R.B.J., Y.N., B.S.A., N.S., B.O., M.H.Q., M.K., G.R., S.C., D.B., I. Maewal, E.J.S.), Biostatistics (M.M.), and Pediatrics (L.J.N.C., L.W.), University of Texas M.D. Anderson Cancer Center, and the Center for Cell and Gene Therapy, Baylor College of Medicine (C.B.) — both in Houston; the Center for International Blood and Marrow Transplant Research, Department of Medicine, Medical College of Wisconsin, Milwaukee (M.E., M.H.); and Mesoblast, New York (J.D.M., P.J.S.). Address reprint requests to Dr. de Lima at the Division of Hematology and Oncology, Case Western Reserve University, University Hospitals Case Medical Center BMT700, 11100 Euclid Ave., LKS5079, Cleveland, OH 44106, or at marcos.delima@uhhospitals.org.

N Engl J Med 2012;367:2305-15.

DOI: 10.1056/NEJMoa1207285

Copyright © 2012 Massachusetts Medical Society.

**U**MBILICAL-CORD BLOOD IS AN ATTRACTIVE source of hematopoietic support for patients who lack a suitable HLA-matched donor. Despite the advantages offered by cord-blood transplantation, such as the use of a frozen, readily available allograft in patients who are members of minority groups, who often have limited access to adult donors, the clinical usefulness in adults has been restricted by the relatively low number of hematopoietic progenitors in a unit of cord blood.<sup>1-4</sup> Delayed or failed engraftment of neutrophils and platelets with cord-blood transplantation can result in an increased risk of transplant-related complications or death and increased health care costs, as compared with the transplantation of bone marrow progenitor cells or peripheral-blood progenitor cells.<sup>5-11</sup>

Transplantation of 2 cord-blood units has extended the use of cord-blood transplantation to adults, but the engraftment remains inferior to that achieved with marrow or peripheral-blood stem cells.<sup>12-14</sup> Thus, our group has focused on the *ex vivo* expansion of cord-blood cells to increase the numbers of myeloid and megakaryocyte progenitors after myeloablative treatment. Suspension cultures of cord-blood mononuclear cells without the use of CD34 selection result in minimal, if any, expansion of nucleated cells or progenitor cells. In our experience, CD34 selection of frozen cord-blood products has resulted in low purities and poor expansion.<sup>15,16</sup> We have previously shown that expansion of both primitive and mature hematopoietic progenitors in unfractionated cord-blood cells is markedly enhanced by coculture with mesenchymal stromal cells.<sup>17</sup> These data suggest that mesenchymal stromal cells provide vital molecular signals for *ex vivo* expansion that are missing in expansion systems based on suspension culture of hematopoietic progenitors in cytokines alone.

We describe a series of 31 adults with hematologic cancers who received transplants of 2 cord-blood units, 1 of which contained cord blood that was expanded *ex vivo* in cocultures with allogeneic mesenchymal stromal cells. Eighty patients whose data were reported to the Center for International Blood and Marrow Transplant Research (CIBMTR) and who received transplants of 2 units of unmanipulated cord blood were used as controls, as was a separate cohort of 60 controls treated at the M.D. Anderson Cancer Center (MDACC).

## METHODS

### STUDY DESIGN AND OVERSIGHT

The first and last authors designed the study, made the decision to submit the manuscript for publication, and vouch for the completeness and accuracy of the data and for the fidelity of the study to the protocol, which is available with the full text of this article at NEJM.org. Mesoblast supported the study and had a confidentiality agreement with the MDACC. Mesoblast provided the “off-the-shelf” mesenchymal precursor cells free of charge as well as support for research nurses and data management. No one who is not listed as an author contributed to the writing of the manuscript. This study was approved by the institutional review board and the Food and Drug Administration (FDA).

### ELIGIBILITY

Patients 18 to 65 years of age with hematologic cancers who lacked an HLA-compatible donor were enrolled at the MDACC between August 2007 and February 2010, after providing written informed consent. Enrollment required the receipt of 2 cord-blood units, each containing more than  $1.5 \times 10^7$  total nucleated cells per kilogram of body weight, that were matched at four or more HLA loci by intermediate-resolution typing for HLA class I alleles (A and B) and high-resolution typing for HLA class II DRB1 alleles.

### COULTURE OF CORD-BLOOD MONONUCLEAR CELLS AND MESENCHYMAL CELLS

For the initial cohort of seven patients, a haplo-identical family member was the donor of mesenchymal stromal cells. Cells were isolated from 100 ml of marrow and cultured in flasks with 50 ml of alpha minimal essential medium supplemented with 20% fetal bovine serum (HyClone). Nonadherent cells were removed after 3 days, and adherent cells were cultured until their confluence reached 70% or higher and then subcultured further until there were confluent mesenchymal stromal cells in 10 flasks. Fourteen days before transplantation, the cord-blood unit with the lowest dose of total nucleated cells was thawed, and equal fractions were placed into each of 10 flasks containing mesenchymal stromal cells with 50 ml of Good Manufacturing Practices (GMP)-grade serum-free medium containing 100 ng per milliliter each of stem-cell factor, Flt3 ligand, throm-

bopoietin (CellGenix), and granulocyte colony-stimulating factor (Amgen).

After 7 days of coculture, the nonadherent cells were transferred to 10 1-liter culture bags (American Fluoroseal) containing 450 ml of coculture medium with cytokines and cultured for an additional 7 days. On day 7 of culture, the flasks were also replenished with 50 ml of the coculture medium containing the cytokines and cultured for another 7 days. On day 14 of culture (day 0 with regard to transplantation), all the nonadherent cells in the flasks and bags were pooled, washed, and infused. The release criteria included cell viability ( $\geq 70\%$ ), a negative endotoxin test, and a negative result on Gram's staining.

The logistics and time required to generate mesenchymal stromal cells from a family-member marrow donor for each patient limited recruitment for the trial. Thus, we evaluated a clinical-grade, off-the-shelf mesenchymal precursor cell product manufactured under GMP conditions (Mesoblast).<sup>18,19</sup> The cells were selected with the use of the STRO-3 monoclonal antibody (specific for an alkaline phosphatase isoform expressed by mesenchymal stem cells) from bone marrow aspirates obtained from healthy donors. A master cell bank was created, and the mesenchymal cells were generated, cryopreserved, and tested comprehensively for infectious agents and tumor formation in accordance with FDA guidelines. The frozen mesenchymal cells were transported to the MDACC and maintained in liquid nitrogen until needed. We found that a single vial of STRO-3+ mesenchymal cells could routinely generate 10 flasks of cells in 4 days, with expansion results that did not differ substantially from those achieved with mesenchymal stem cells derived from a family member.<sup>20</sup> Thus, we amended our protocol to use the STRO-3+ mesenchymal cells in the subsequent 24 treated patients.

#### IMMUNOPHENOTYPING AND COLONY-FORMATION ASSAY

Cord-blood cells before and after expansion were analyzed by means of flow cytometry and assays of colony-forming units in culture (CFU-C) for hematopoietic stem cells and progenitor cells, as previously described.<sup>21,22</sup>

#### CONDITIONING REGIMEN AND PROPHYLAXIS

The ablative conditioning regimen consisted of melphalan at a dose of 140 mg per square meter

of body-surface area 8 days before transplantation (day -8), thiotepa at a dose of 10 mg per kilogram on day -7, fludarabine at a daily dose of 40 mg per square meter on days -6 through -3, and rabbit antithymocyte globulin (Genzyme) at a dose of 1.25 mg per kilogram on day -4 and 1.75 mg per kilogram on day -3. Prophylaxis against graft-versus-host disease (GVHD) consisted of tacrolimus at a daily dose of 0.03 mg per kilogram on days -2 through 180 and mycophenolate mofetil at a dose of 1 g orally twice daily on days -2 through 100.

#### TRANSPLANTATION PROCEDURE AND SUPPORTIVE CARE

On day 0, the unit of unmanipulated cord blood was thawed, washed, and infused intravenously, followed by infusion of the expanded cord-blood cells. All patients received subcutaneous granulocyte colony-stimulating factor (Amgen) at a daily dose of 5  $\mu\text{g}$  per kilogram from day 1 until neutrophil recovery.

#### HEMATOPOIETIC RECOVERY

The time to neutrophil engraftment was defined as the first of 3 consecutive days with an absolute neutrophil count of  $0.5 \times 10^9$  per liter or higher, and the time to platelet engraftment as the first of 7 consecutive days with a platelet count of  $20 \times 10^9$  per liter or higher without platelet transfusion. Chimerism in the peripheral blood or bone marrow was documented between days 20 and 30, on day 60, and every 3 months thereafter by means of a polymerase-chain-reaction assay, with primer sets flanking microsatellite repeats.

#### COMPARISON WITH CIBMTR AND MDACC HISTORICAL DATA

We compared engraftment results and survival in the group of patients who received cord-blood cells expanded by coculture with STRO-3+ mesenchymal cells with the outcomes among 80 patients who received 2 units of unmanipulated cord blood between 2008 and 2010 at 24 U.S. transplantation centers and whose data were reported to the CIBMTR. Controls were matched for age, diagnosis, disease stage, intensity of the myeloablative conditioning regimen, and GVHD prophylaxis with a calcineurin inhibitor and mycophenolate. The most commonly used conditioning regimen was total-body irradiation (1320 cGy) in combination with fludarabine and cyclophos-

phamide, followed in frequency by a regimen of melphalan, fludarabine, and thiotepa. The median follow-up time for controls was 6 months (range, 3 to 12). We also compared the study group with institutional controls at the MDACC (consecutive adults who received 2 units of unmanipulated cord blood after myeloablative conditioning between 2001 and 2011). The most commonly used conditioning regimens were thiotepa combined with melphalan and fludarabine or with clofarabine and busulfan. The median follow-up time was 7 months (range, 1 to 72).

#### END POINTS

The primary end points were safety, feasibility and cumulative incidence of neutrophil and platelet engraftment, median time to neutrophil and to platelet recovery among patients who reached these end points, the proportion of patients in whom transplantation was successful (as defined below), and the cumulative incidence of acute or chronic GVHD. Acute GVHD was graded according to consensus criteria.<sup>23</sup> Chronic GVHD was diagnosed when clinical signs were present or developed for the first time after day 100. Because this was a small, short-term study, we used an early composite definition of successful transplantation (engraftment of neutrophils by day 26, engraftment of platelets by day 60, and survival at day 100), as suggested by others,<sup>24</sup> and compared recipients of expanded cord-blood transplants with the CIBMTR and MDACC controls.

#### STATISTICAL ANALYSIS

Cumulative incidence curves were constructed with the use of the approach described by Gooley et al.,<sup>25</sup> with death considered to be a competing event. The methods of Fine and Gray were used to compare cumulative incidence curves between groups of patients.<sup>26</sup> The percentages of patients in whom engraftment had occurred at specific time points were compared between groups with the use of a two-sample z-test, and the Wilcoxon rank-sum test was used to compare recipients of expanded cord blood and recipients of unmanipulated cord blood with respect to median values.

## RESULTS

#### PATIENTS

Table 1 shows the characteristics of the 31 adults who received expanded cord-blood units as well

as those of the CIBMTR and institutional controls who received unmanipulated cord-blood units only. Among all patients who received a unit of expanded cord blood, 58% had advanced disease (as defined by morphologic criteria for leukemias and the myelodysplastic syndrome) at the time of transplantation. Of the 24 patients who received STRO-3+ mesenchymal-cell-expanded cord blood, 12 (50%) had advanced disease; data on these patients were compared with the CIBMTR historical data. A lower proportion of the CIBMTR controls had advanced disease at the time of transplantation (31 of 80 [39%]).

#### CORD-BLOOD EXPANSION AND INFUSION

After 14 days of culture, total nucleated cells were expanded by a median factor of 12.2, CD34+ cells were expanded by a factor of 30.1, and CFU-C had expanded by a factor of 17.5 (Fig. 1A, 1B, and 1C). The units of mesenchymal-cell-expanded cord blood had increased proportions of monocytes and granulocytes but decreased proportions of T and B cells, as compared with the units of unmanipulated cord blood (Fig. 1D). Megakaryocyte and platelet progenitors were evaluated in a cohort of patients. In the units of unmanipulated cord blood (received by 15 patients), a median of  $202 \times 10^6$  CD41a+CD61+ cells (range,  $94 \times 10^6$  to  $308 \times 10^6$ ) were present in the platelet gate on flow cytometry. In the units of expanded cord blood (received by 11 patients), the median number of CD41a+CD61+ cells was  $406 \times 10^6$  (range,  $50 \times 10^6$  to  $1350 \times 10^6$ ). Patients received a median of  $5.08 \times 10^6$  CD41a+CD61+ cells per kilogram from the units of mesenchymal-cell-expanded cord blood (data not shown).

There were no significant differences in nucleated cells, CD34+ cells, or CFU-C between the family-member-derived and STRO-3+ mesenchymal-cell-expanded units of cord blood (Fig. S1 in the Supplementary Appendix, available at NEJM.org). The numbers of CD34+CD38- cells and CD133+CD33+ cells did differ significantly according to the cord-blood source, with more of these cell types in the STRO-3+ mesenchymal-cell-expanded cord blood ( $P=0.02$  and  $P=0.03$ , respectively). Expansion yielded a median of  $5.84 \times 10^7$  nucleated cells per kilogram,  $0.95 \times 10^6$  CD34+ cells per kilogram, and  $3.00 \times 10^5$  CFU-C per kilogram (Fig. 1E). These doses were higher than in our previous transplantations of 2 units of unmanipulated cord blood. For all cord-blood

**Table 1. Demographic and Clinical Characteristics of the Patients and Controls.\***

Characteristic	Patients		Controls	
	Haploidentical Mesenchymal Stromal Cells (N=7)	STRO-3+ Mesenchymal Progenitor Cells (N=24)	MDACC (N=60)†	CIBMTR (N=80)
Weight — kg				
Median	79	75	75	82
Range	53–95	51–118	48–122	40–170
Age — yr				
Median	31	39	32	36
Range	26–55	18–61	18–64	18–61
Diagnosis — no. (%)				
AML or MDS	5 (71)	16 (67)	31 (52)	52 (65)
ALL	1 (14)	4 (17)	15 (25)	20 (25)
Non-Hodgkin's or Hodgkin's lymphoma	0	3 (12)	5 (8)	7 (9)
CLL	1 (14)	1 (4)	2 (3)	1 (1)
CML or other MPD	0	0	6 (10)	0
Myeloma	0	0	1 (2)	0
Disease status at time of transplantation — no. (%)				
Complete remission	1 (14)	12 (50)	26 (43)	49 (61)
First remission	1 (14)	2 (8)	8 (13)	17 (21)
Second or subsequent remission	0	10 (42)	18 (30)	32 (40)
Active disease	6 (86)	12 (50)	34 (57)	31 (39)
Donor–recipient HLA compatibility — no. (%)				
6/6	0	1 (4)	4 (7)	4 (5)
5/6	3 (43)	3 (12)	13 (22)	14 (18)
4/6	4 (57)	20 (83)	43 (72)	58 (72)
3/6	0	0	0	2 (2)
Not reported	0	0	0	2 (2)

\* ALL denotes acute lymphocytic leukemia, AML acute myeloid leukemia, CIBMTR Center for International Blood and Marrow Transplant Research, CLL chronic lymphocytic leukemia, CML chronic myeloid leukemia, MDS myelodysplastic syndrome, and MPD myeloproliferative disorder.

† Two controls from the M.D. Anderson Cancer Center (MDACC) were excluded owing to lack of engraftment and chimerism documentation.

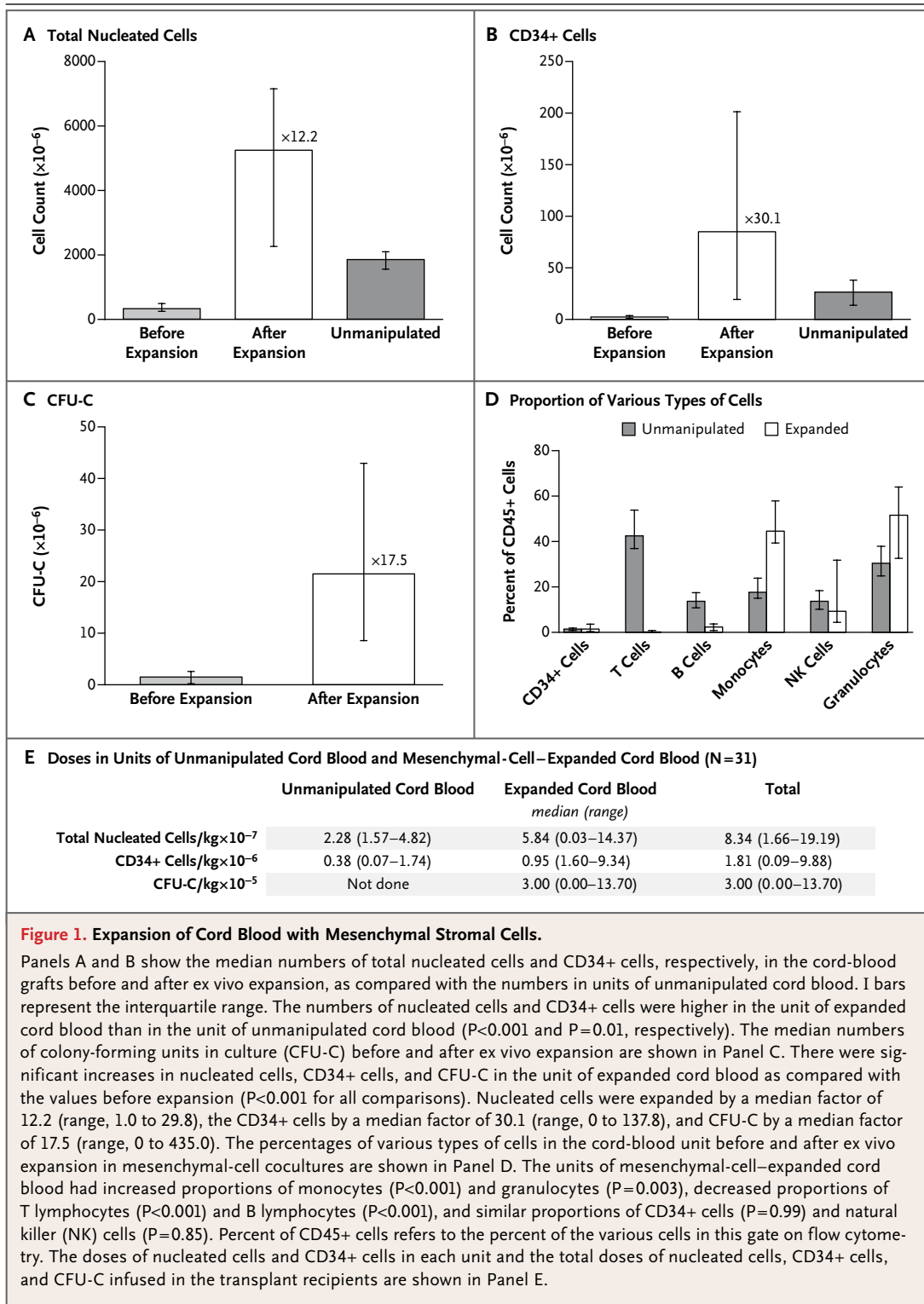
units, the cell viability was greater than 70%, and Gram's staining and endotoxin tests were negative before infusion. There were no serious adverse events related to the infusions of cord blood.

#### NEUTROPHIL AND PLATELET RECOVERY

One patient died from fungal sepsis on day 30 without engraftment of neutrophils or platelets. In patients in whom engraftment occurred, the median time to neutrophil recovery was 15 days (range, 9 to 42) and the median time to platelet recovery was 42 days (range, 15 to 62). There were

no significant differences in the time to neutrophil or platelet engraftment between patients who received cord blood expanded in cocultures with family-member–derived mesenchymal stromal cells and those who received cord blood expanded with STRO-3+ mesenchymal cells (Fig. S2 and Table S1 in the Supplementary Appendix). In addition, within the limits of the small sample, the degree of donor–recipient HLA matching did not correlate with the speed or frequency of engraftment.

A decision was made to move forward with STRO-3+ mesenchymal cells rather than family-



member-derived cells. Thus, we restricted our comparative analysis with the CIBMTR controls to recipients of cord blood expanded with the STRO-3+ mesenchymal cells. The median time to neutrophil engraftment was 15 days in the recipients of expanded cord blood versus 24 days

**Table 2. Engraftment in Recipients of Ex Vivo Expanded Cells and MDACC and CIBMTR Controls.**

Engraftment	Recipients of Ex Vivo Expanded Cells (N=24)	MDACC Controls (N=60)	P Value*	CIBMTR Controls (N=80)	P Value†
<b>Neutrophil engraftment</b>					
No. of patients	23	51		67	
Time to engraftment — days					
Median	15	21	0.08	24	<0.001
Range	9–42	6–45		12–52	
Cumulative incidence — % (95% CI)					
By 26 days	88 (66–96)	62 (48–73)	0.006	53 (41–63)	<0.001
By 42 days	96 (74–99)	83 (71–91)	0.05	78 (67–86)	0.005
<b>Platelet engraftment</b>					
No. of patients	18	38		37	
Time to engraftment — days					
Median	42	41	0.33	49	0.03
Range	15–62	26–126		18–264	
Cumulative incidence — % (95% CI)					
By 60 days	71 (48–85)	52 (38–63)	0.10	31 (21–41)	<0.001
By 180 days	75 (53–88)	63 (50–74)	0.28	46 (35–58)	0.01

\* P values are for the comparison between recipients of STRO-3+ mesenchymal precursor cells and MDACC controls.

† P values are for the comparison between recipients of STRO-3+ mesenchymal precursor cells and CIBMTR controls.

in the CIBMTR controls who received unmanipulated cord blood only ( $P<0.001$ ) (Table 2). The median time to platelet engraftment was 42 days in the recipients of expanded cord blood versus 49 days in controls ( $P=0.03$ ).

On day 26, the cumulative incidence of neutrophil engraftment was 88% among recipients of expanded cord blood as compared with 53% among CIBMTR controls ( $P<0.001$ ) (Table 2 and Fig. 2A). On day 60, the cumulative incidence of platelet engraftment was 71% among recipients of expanded cord blood as compared with 31% in the CIBMTR cohort ( $P<0.001$ ) (Table 2 and Fig. 2B). The comparison of the STRO-3+ group with the institutional controls is also shown in Table 2. The dose of nucleated cells per kilogram in the recipients of expanded cord blood correlated with the time to neutrophil recovery ( $P=0.004$ ) (Fig. 3A). The dose of CD34+ cells per kilogram in the recipients of expanded cord blood also correlated with the time to neutrophil engraftment ( $P=0.006$ ) (Fig. 3B). For the composite end point of neutrophil engraftment by day 26, platelet engraftment by day 60, and survival at 100 days, success rates were 63% among recipients of expanded cord blood

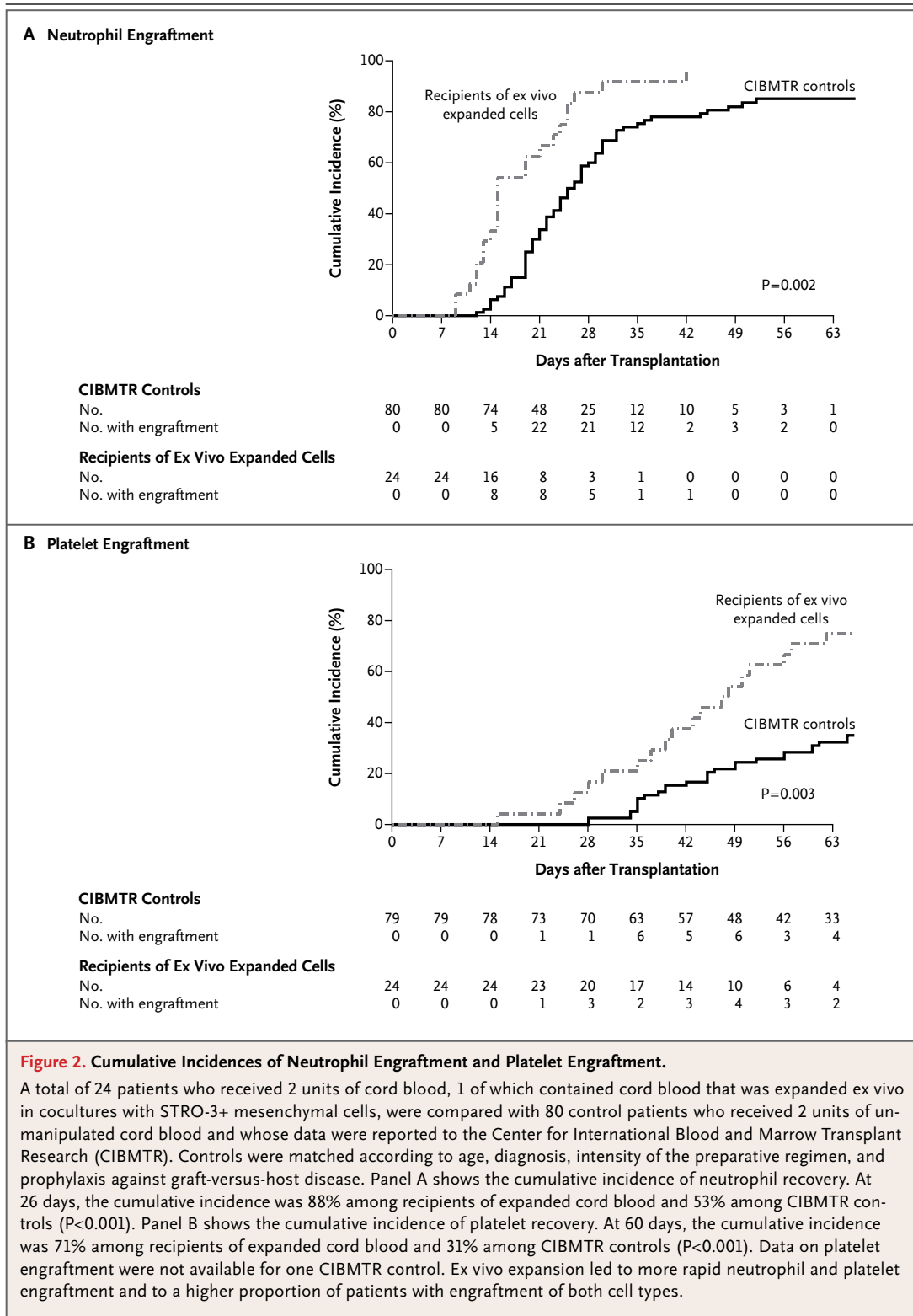
versus 24% among CIBMTR controls ( $P<0.001$ ) and 35% among MDACC controls ( $P=0.03$ ).

#### CHIMERISM

Twenty-eight patients who could be evaluated had complete (100%) donor chimerism with 1 or both cord-blood units in the T-cell and myeloid-cell compartments between days 21 and 30 after transplantation. Fifteen of the 28 patients (54%) had evidence of hematopoiesis solely from the unit of unmanipulated cord blood, and 13 (46%) had hematopoiesis derived from both units (the unit of unmanipulated cord blood predominated in 9 patients, and the unit of expanded cord blood predominated in 4). At 6 months after transplantation, the expanded cord blood was present in 13% of the patients, although the unmanipulated cord blood predominated. Long-term engraftment ( $>1$  year) was produced primarily by the unit of unmanipulated cord blood in all patients.

#### ACUTE AND CHRONIC GVHD

The cumulative incidence of grade II to IV acute GVHD was 42% and the cumulative incidence of grade III or IV disease was 13%; chronic GVHD was



observed in 45% of the patients. There were no significant differences between the recipients of STRO-3+ mesenchymal-cell-expanded cord blood and the CIBMTR or institutional controls with regard to grade II to IV acute GVHD or grade III or IV disease.



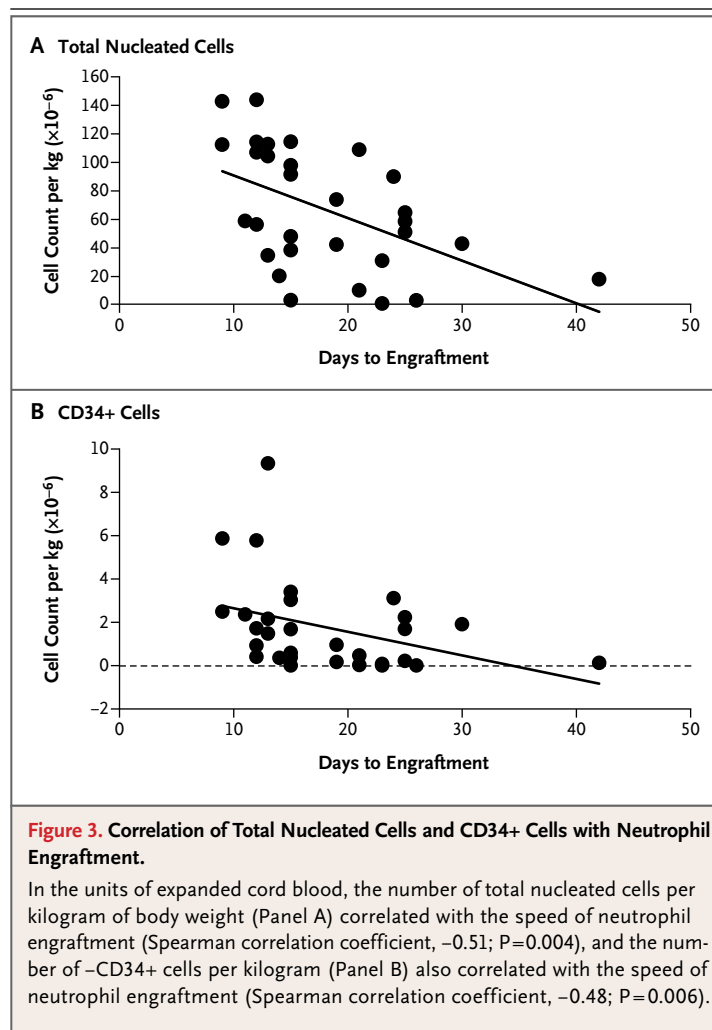
## SURVIVAL AND CAUSES OF DEATH

At a median follow-up of 12 months (range, 6 to 20), 10 of these 31 high-risk patients remained alive. Causes of death among the recipients of expanded cord blood included relapse (4 patients), GVHD (4), chemotherapy-induced toxicity (2), and infections (11). Infections were bacterial in 3 patients, viral in 1, and fungal in 5; the source of infection was unknown in 2 patients.

## DISCUSSION

We sought to improve hematopoiesis and engraftment by propagating hematopoietic progenitors derived from cord blood in allogeneic mesenchymal-cell cocultures before transplantation. Brunstein et al. reported that in 536 adult recipients of 2 units of unmanipulated cord blood, the median time to engraftment of neutrophils was 26 days, and the median time to engraftment of platelets was 53 days — intervals that were significantly longer than those in recipients of bone marrow or peripheral-blood stem cells in their series.<sup>24</sup> In this case series, we found that patients who received myeloablative therapy followed by 2 units of cord blood, with 1 unit containing cord blood expanded ex vivo in mesenchymal-cell cocultures, had a shorter time to engraftment and higher cumulative incidences of neutrophil and platelet engraftment, as compared with historical controls and controls at other sites who received unmanipulated cord blood only.

We attribute the positive engraftment results to the increased numbers of committed myeloid and megakaryocytic progenitors in the expanded cord-blood graft that were capable of rapid engraftment after transplantation. Indeed, for approximately half the patients evaluated, engraftment of expanded cells was associated with early neutrophil recovery. Our data suggest that mesenchymal cells, by recapitulating some of the physiological cues of the stem-cell niche that are absent in suspension cultures, provide conditions that enhance the survival and proliferation of cord-blood progenitor cells responsible for early marrow repopulation.<sup>16,17</sup> Another potential advantage of transplanting 1 unit of expanded cord blood and 1 unit of unmanipulated cord blood is that this approach guarantees early hematopoietic recovery with the unit of expanded cord blood and ultimate engraftment of the unit of nonexpanded cord blood with better HLA-matching to the patient. The expansion process appears to



favor an increase in cells capable of early repopulation; however, because long-term engraftment was uniformly from the unit of unmanipulated cord blood, it must also be acknowledged that the culture process appears to deplete the cells capable of long-term repopulation.

The incidence and severity of GVHD were similar to those in other trials of cord-blood transplantation with expansion<sup>27,28</sup> or without expansion.<sup>4,6,14,28</sup> During the past decade, several strategies to expand cord-blood progenitors ex vivo have been investigated, with little tangible improvement in the time to engraftment.<sup>27,29,30</sup> Recently, however, Delaney et al. investigated the use of CD34-selected cord-blood progenitors cultured with growth factors in the presence of Notch ligand.<sup>31</sup> They reported an improvement in the time to neutrophil engraftment that was similar to the improvement we observed. Other promis-

ing strategies to enhance engraftment include the intraosseous administration of a single cord-blood unit,<sup>32</sup> the addition of haploidentical CD34+ peripheral-blood progenitor cells to a single unit of unmanipulated cord blood,<sup>33</sup> and the expansion of a fraction of a single cord-blood unit with growth factors and a copper chelator.<sup>34</sup> Another potentially effective approach is to enhance the homing of cord blood to the marrow by fucosylating the cord-blood unit<sup>35</sup> or treating it with prostaglandin E<sub>2</sub><sup>36</sup> before transplantation. Our group chose to investigate the expansion of the entire cord-blood mononuclear-cell fraction, because in our prior clinical studies of CD34+ cord-blood expansion,<sup>27,28</sup> we observed prohibitive cell losses with immunomagnetic enrichment.

Our findings support the hypothesis that transplantation of mesenchymal-cell-expanded cord blood shortens the time to neutrophil and plate-

let recovery after transplantation in adults. The transition from family-member-derived mesenchymal cells to unrelated STRO-3+ mesenchymal cells significantly increased the clinical feasibility of our strategy without compromising cord-blood expansion.<sup>20</sup> Whether the differences that we observed will hold up remains to be proven in direct head-to-head comparisons.

Supported in part by Mesoblast, grants from the National Cancer Institute (RO1 CA061508-18, to Drs. Shpall, Simmons, and Robinson; and P01 CA148600-02, to Drs. Shpall, Simmons, Robinson, Mollidre, Cooper, and Bollard and Mr. Munsell) and the Cancer Prevention Research Institute of Texas (RO1 RP100469, to Drs. Shpall, Simmons, and Robinson and Mr. Munsell), and a Cancer Center Core Grant (CA016672, to the M.D. Anderson Cancer Center investigators).

Disclosure forms provided by the authors are available with the full text of this article at NEJM.org.

We thank the patients who agreed to participate in this study; our Cell Therapy Laboratory staff for their support; the teams of nurses, pharmacists, midlevel practitioners, and physicians for their patient care; and John Gilbert for editorial assistance with an earlier draft of the manuscript.

## REFERENCES

- Rocha V, Labopin M, Sanz G, et al. Transplants of umbilical-cord blood or bone marrow from unrelated donors in adults with acute leukemia. *N Engl J Med* 2004;351:2276-85.
- Bradstock K, Hertzberg M, Kerridge I, et al. Single versus double unrelated umbilical cord blood units for allogeneic transplantation in adults with advanced haematological malignancies: a retrospective comparison of outcomes. *Intern Med J* 2009;39:744-51.
- Barker JN. Umbilical cord blood (UCB) transplantation: an alternative to the use of unrelated volunteer donors? *Hematology (Am Soc Hematol Educ Program)* 2007;2007:55-61.
- Rocha V, Gluckman E. Outcomes of transplantation in children with acute leukaemia. *Lancet* 2007;369:1906-8.
- Gluckman E, Rocha V. History of the clinical use of umbilical cord blood hematopoietic cells. *Cytotherapy* 2005;7:219-27.
- Gluckman E. Hematopoietic stem-cell transplants using umbilical-cord blood. *N Engl J Med* 2001;344:1860-1.
- Eapen M, Rocha V, Sanz G, et al. Effect of graft source on unrelated donor hematopoietic stem-cell transplantation in adults with acute leukaemia: a retrospective analysis. *Lancet Oncol* 2010;11:653-60.
- Laughlin MJ, Barker J, Bambach B, et al. Hematopoietic engraftment and survival in adult recipients of umbilical-cord blood from unrelated donors. *N Engl J Med* 2001;344:1815-22.
- Bashir Q, Robinson SN, de Lima MJ, Parmar S, Shpall E. Umbilical cord blood transplantation. *Clin Adv Hematol Oncol* 2010;8:786-801.
- Majhail NS, Mothukuri JM, Brunstein CG, Weisdorf DJ. Costs of hematopoietic cell transplantation: comparison of umbilical cord blood and matched related donor transplantation and the impact of posttransplant complications. *Biol Blood Marrow Transplant* 2009;15:564-73.
- Körbling M, Freireich EJ. Twenty-five years of peripheral blood stem cell transplantation. *Blood* 2011;117:6411-6.
- Barker JN, Weisdorf DJ, Wagner JE. Creation of a double chimera after the transplantation of umbilical-cord blood from two partially matched unrelated donors. *N Engl J Med* 2001;344:1870-1.
- De Lima M, St John LS, Wieder ED, et al. Double-chimaerism after transplantation of two human leucocyte antigen mismatched, unrelated cord blood units. *Br J Haematol* 2002;119:773-6.
- Barker JN, Weisdorf DJ, DeFor TE, et al. Transplantation of 2 partially HLA-matched umbilical cord blood units to enhance engraftment in adults with hematologic malignancy. *Blood* 2005;105:1343-7.
- Briddell RA, Kern BP, Zilm KL, Stoney GB, McNiece IK. Purification of CD34+ cells is essential for optimal ex vivo expansion of umbilical cord blood cells. *J Hematother* 1997;6:145-50.
- McNiece I, Harrington J, Turney J, Kellner J, Shpall EJ. Ex vivo expansion of cord blood mononuclear cells on mesenchymal stem cells. *Cytotherapy* 2004;6:311-7.
- Robinson SN, Ng J, Niu T, et al. Superior ex vivo cord blood expansion following co-culture with bone marrow-derived mesenchymal stem cells. *Bone Marrow Transplant* 2006;37:359-66.
- Simmons PJ, Torok-Storb B. Identification of stromal cell precursors in human bone marrow by a novel monoclonal antibody, STRO-1. *Blood* 1991;78:55-62.
- Idem. CD34 expression by stromal precursors in normal human adult bone marrow. *Blood* 1991;78:2848-53.
- Robinson SN, Simmons PJ, Brouard N, et al. Efficacy of "off-the-shelf," commercially-available, third-party mesenchymal stem cells (MSC) in ex vivo cord blood (CB) co-culture expansion. Presented at the 49th annual meeting of the American Society of Hematology, Atlanta, December 8-11, 2007. abstract.
- Sutherland DR, Anderson L, Keeney M, Nayar R, Chin-Yee I. The ISHAGE guidelines for CD34+ cell determination by flow cytometry. *J Hematother* 1996;5:213-26.
- Miller CL, Lai B. Human and mouse hematopoietic colony-forming cell assays. *Methods Mol Biol* 2005;290:71-89.
- Przepiorcka D, Weisdorf D, Martin P, et al. 1994 Consensus Conference on acute GVHD grading. *Bone Marrow Transplant* 1995;15:825-8.
- Brunstein CG, Gutman JA, Weisdorf DJ, et al. Allogeneic hematopoietic cell transplantation for hematologic malignancy: relative risks and benefits of dou-

- ble umbilical cord blood. *Blood* 2010;116:4693-9.
25. Gooley TA, Leisenring W, Crowley J, Storer BE. Estimation of failure probabilities in the presence of competing risks: new representations of old estimators. *Stat Med* 1999;18:695-706.
26. Fine JP, Gray RJ. A proportional hazards model for the subdistribution of a competing risk. *J Am Stat Assoc* 1999;94:496-509.
27. Shpall EJ, Quinones R, Giller R, et al. Transplantation of ex vivo expanded cord blood. *Biol Blood Marrow Transplant* 2002;8:368-76.
28. de Lima M, McMannis J, Komanduri K, et al. Randomized study of double cord blood transplantation (CBT) with versus without ex-vivo expansion (EXP). Presented at the 49th annual meeting of the American Society of Hematology, Atlanta, December 8-11, 2007. abstract.
29. Kraus M, Gunter K, Laning J, et al. Phase I clinical results using selectively amplified hematopoietic stem/progenitor cells (HPC) meets primary endpoint for safety in 10 patient trial. In: Proceedings of the International Society of Cell Therapy Annual Meeting, Sydney, June 24-27, 2007. abstract.
30. Madlambayan GJ, Rogers I, Kirouac DC, et al. Dynamic changes in cellular and microenvironmental composition can be controlled to elicit in vitro human hematopoietic stem cell expansion. *Exp Hematol* 2005;33:1229-39. [Erratum, *Exp Hematol* 2006;34:122.]
31. Delaney C, Heimfeld S, Brashem-Stein C, Voorhies H, Manger RL, Bernstein ID. Notch-mediated expansion of human cord blood progenitor cells capable of rapid myeloid reconstitution. *Nat Med* 2010;16:232-6.
32. Frassoni F, Gualandi F, Podesta M, et al. Direct intrabone transplant of unrelated cord-blood cells in acute leukaemia: a phase I/II study. *Lancet Oncol* 2008;9:831-9.
33. Fernández MN, Regidor C, Cabrera R, et al. Unrelated umbilical cord blood transplants in adults: early recovery of neutrophils by supportive co-transplantation of a low number of highly purified peripheral blood CD34+ cells from an HLA-haploidentical donor. *Exp Hematol* 2003;31:535-44.
34. de Lima M, McMannis J, Gee A, et al. Transplantation of ex vivo expanded cord blood cells using the copper chelator tetraethylenepentamine: a phase I/II clinical trial. *Bone Marrow Transplant* 2008;41:771-8.
35. Robinson SN, Simmons PJ, Thomas MW, et al. Ex vivo fucosylation improves human cord blood engraftment in NOD-SCID IL-2Rgamma(null) mice. *Exp Hematol* 2012;40:445-56.
36. Hoggatt J, Singh P, Sampath J, Pelus LM. Prostaglandin E2 enhances hematopoietic stem cell homing, survival, and proliferation. *Blood* 2009;113:5444-55.

Copyright © 2012 Massachusetts Medical Society.